



# INSTRUCTION BULLETIN

No. 9021165  
Machine: 6100E  
Published: 12-2022  
Rev. 00

**NOTE: DO NOT DISCARD the Parts List from the Instruction Bulletin. Place the Parts List in the appropriate place in the machine manual for future reference. Retaining the Parts List will make it easier to reorder individual parts and will save the cost of ordering an entire kit.**

*NOTE: Numbers in parenthesis ( ) are reference numbers for parts listed in Bill of Materials.*

Installation instructions for **kit number 9021166**

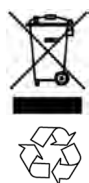
Kit installation must be performed by TennantTrue<sup>®</sup> service or an authorized service provider.

## SYNOPSIS:

This kit contains the parts needed to replace the motor controller on 6100E sweepers.  
Please follow step-by-step instructions.

## SPECIAL TOOLS / CONSIDERATIONS: NONE

(Estimated time to complete: 1 hour)



## PROTECT THE ENVIRONMENT

Please dispose of packaging materials, used machine components such as batteries and fluids in an environmentally safe way according to local waste disposal regulations.

Always remember to recycle.

## PREPARATION:

1. If necessary shake filter and empty hopper prior to starting the procedure.

**FOR SAFETY: Before leaving or servicing machine, stop on level surface, turn off machine, and remove key.**

2. Disconnect the battery cable from the machine.



**WARNING: Always disconnect battery cables from machine before working on electrical components.**

## INSTALLATION:

1. Remove the right side cover from the machine. Set the cover aside.

2. Remove the hopper from the machine. (Fig. 1)



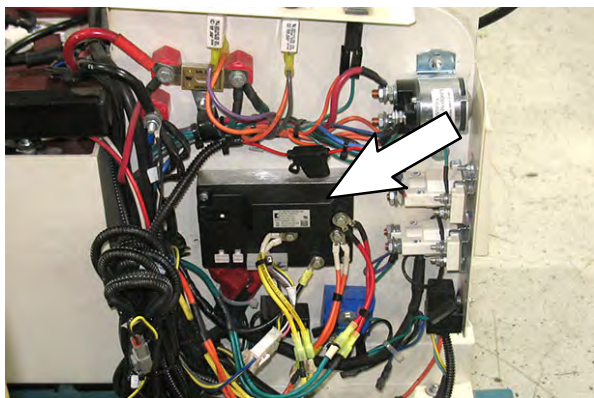
FIG. 1

3. Unlatch the latches securing the filter tray to the filter panel and lower the filter tray. (Fig. 2)



**FIG. 2**

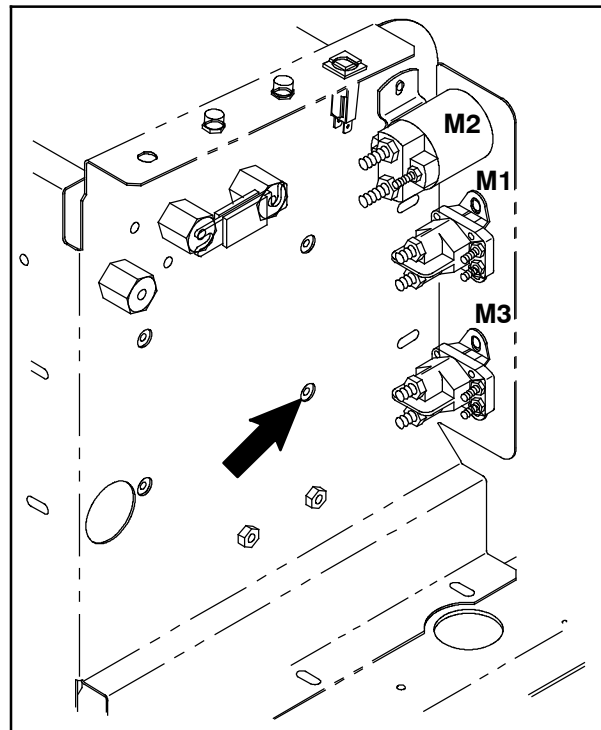
4. Disconnect all main wire harness cable/wire connections from the controller. (Fig. 3)



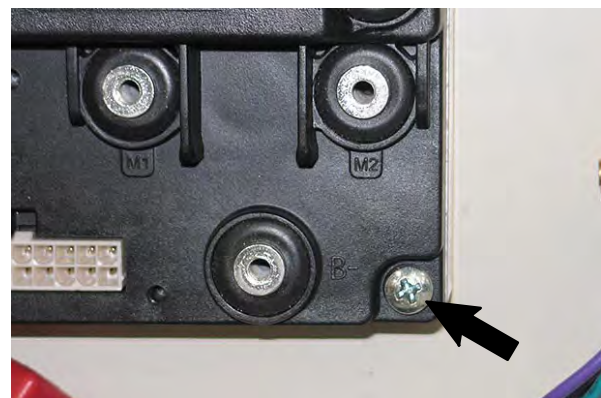
**FIG. 3**

5. Remove the controller from the machine. Discard the controller and all mounting hardware. (Fig. 3)

6. Use one M5 pan screw (7), one flat washer (9), and one M5 hex nut (10) to loosely install the new controller (6) onto the rear lensil electrical panel. (Fig. 4/ Fig. 5/ Fig. 6)



**FIG. 4**



**FIG. 5**

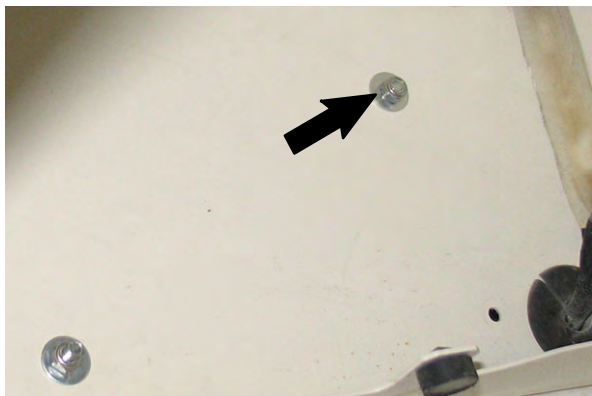


**FIG. 6**

7. Hold the controller (6) level on the rear lentil electrical panel and mark location where the second hole required to secure the controller onto the electrical panel will be located.
8. Drill a 13/64 in. hole into the location on rear lentil electrical panel marked in the previous step.
9. Use another M5 pan screw (7), flat washer (9), and M5 hex nut (10) to install the controller (6) onto the rear lentil electrical panel and completely tighten the previously installed M5 pan screw and M5 hex nut to fully secure the controller onto the rear lentil electrical panel. (Fig. 7/ Fig. 8)



**FIG. 7**



**FIG. 8**

10. Connect the J3 harness adapter (1) to the main wire harness connector previously connected to terminal J3 on the removed controller.

11. Connect the M1 harness adapter (2) to the main wire harness connector previously connected to terminal M1 on the removed controller.

12. Connect the M2 harness adapter (3) to the main wire harness connector previously connected to terminal M2 on the removed controller.

13. Connect the B+ harness adapter (4) to the main wire harness connector previously connected to terminal B+ on the removed controller.

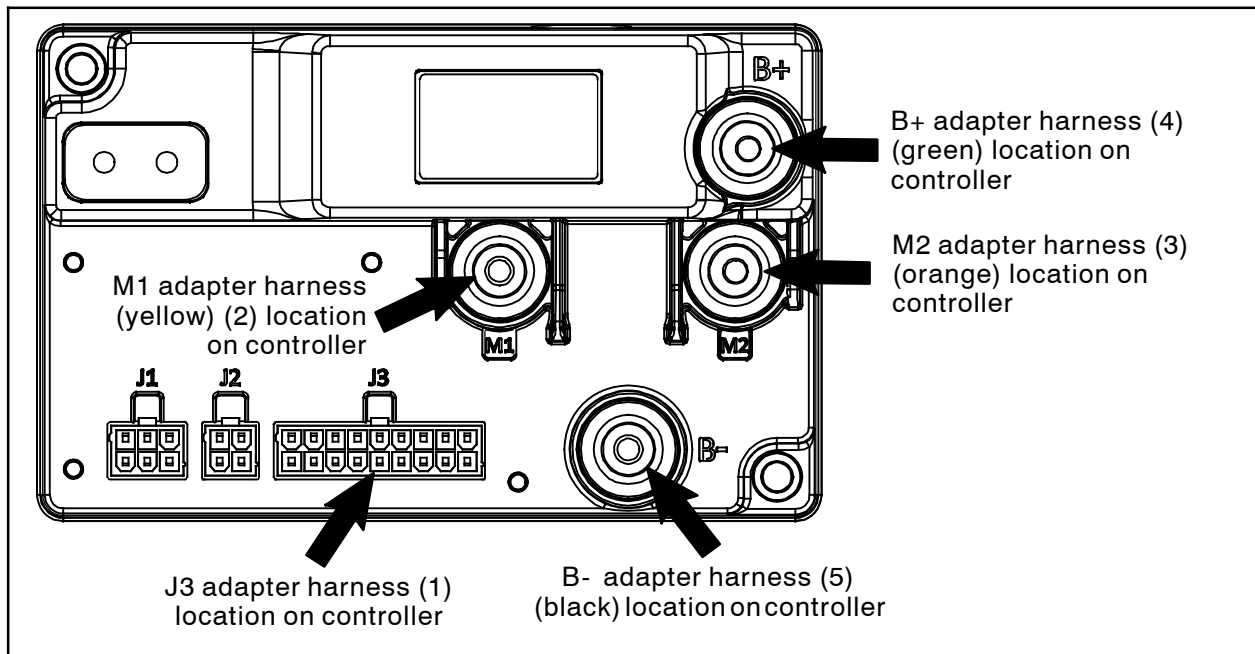
14. Connect the B- harness adapter (5) to the main wire harness connector previously connected to terminal B- on the removed controller.

15. Connect the J3 harness adapter (1) to the controller (6) terminal J3. (Fig. 9/ Fig. 10)

16. Use an M5 hex screw (8) and a flat washer to connect the M1 harness adapter (2), M2 harness adapter (3), B+ harness adapter (4), and B- harness adapter (5) to the controller (6). Refer to marked locations on the controller for where the adapter harnesses should be connected. (Fig. 9/ Fig. 10)



**FIG. 9**



**FIG. 10**

17. Check all previously install adapter harnesses to ensure they are connected to the correct location on the controller. (Fig. 10/Fig. 11)
18. Use cable ties (11) to secure the various adapter harnesses away from any moving parts or areas where the harnesses could potentially be damaged.
19. Reconnect the battery cable to the machine.
20. Reinstall all components removed from the machine to access the rear electrical panel in reverse order of disassembly.
21. Test the machine. Turn the key switch ON and operate the machine. Press the directional pedal to drive the machine forward and in reverse.
 

If the machine moves in the opposite direction of what is pressed on the directional pedal the M1 and M2 connections have been connected to the wrong location. Stop test and check/correct M1 and M2 connections.

If the main fuse is blown, the B+ and B- connections are connected to wrong locations. Stop test, check/correct wire connections, and replace fuse.



---

**Bill Of Materials For Controller Kit, Curt 1226 [6100E] - 9021166**

<b>Ref.</b>	<b>Tennant Part No.</b>	<b>Description</b>	<b>Qty.</b>
1	1076645	Harness, Adapter, J3 [Curt 1226]	1
2	1077177	Harness, Adapter, M1 [Curt 1226]	1
3	1076781	Harness, Adapter, M2 [Curt 1226]	1
4	1076782	Harness, Adapter, B+ [Curt 1226]	1
5	1076783	Harness, Adapter, B- [Curt 1226]	1
6	1252048	Controller, Motor, 36VDC 090A [Curt 1226]	1
7	06939	Screw, Pan, M5 X 0.8 X 45, 4.8	2
8	12312	Screw, Hex, M5 X 0.80 X 12, 8.8	4
9	19066	Washer, Flat, 0.25B 0.56D .05, PL, 10	6
10	09739	Nut, Hex, Lock, M5 X 0.80, NL, SS	2
11	130773	Tie, Cable, Nyl, 11.0l, .14w, 3.0 Max D	4

TENNANT COMPANY  
10400 Clean Street  
Eden Prairie, MN 55344- 2650